

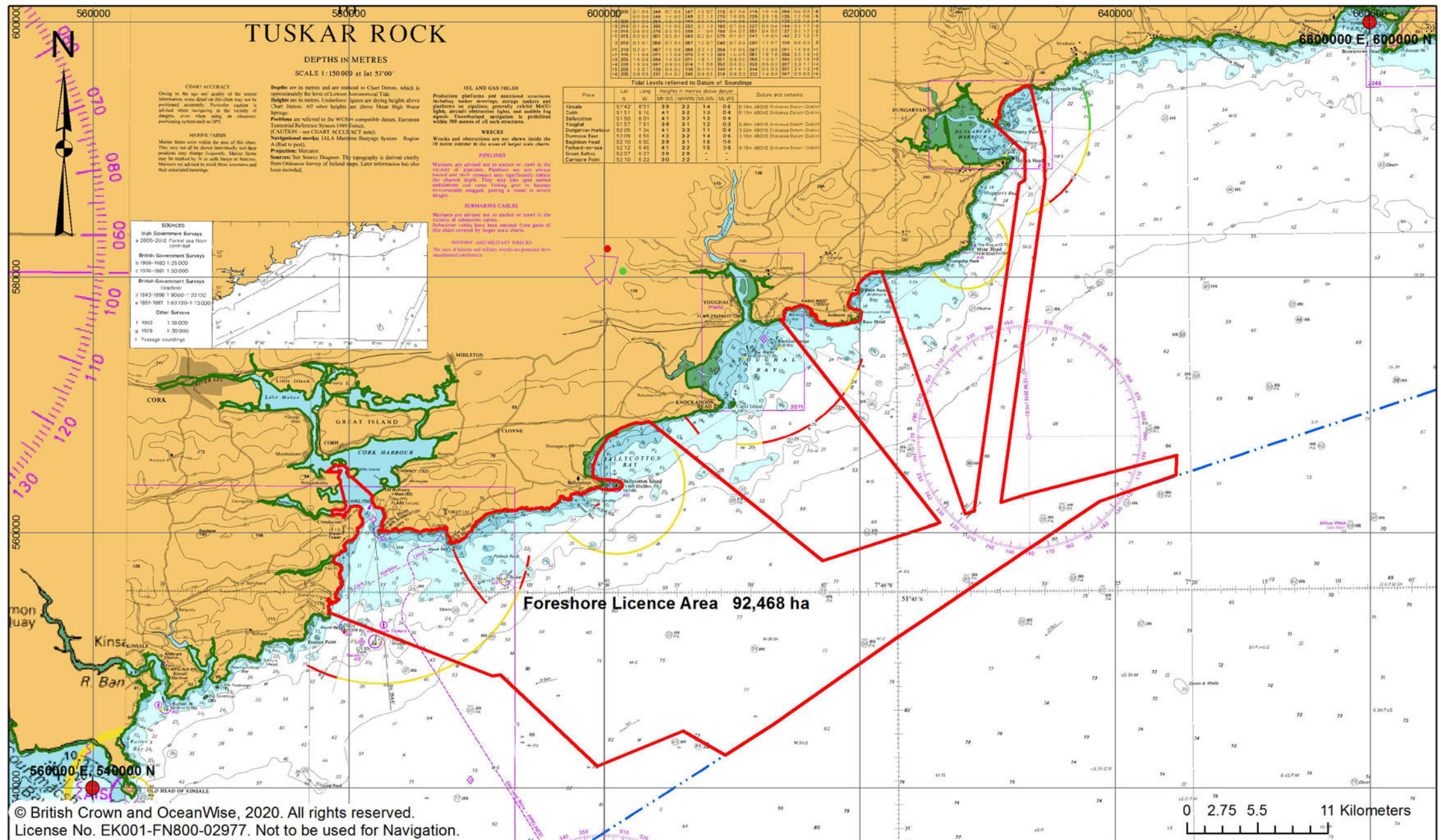


INIS EALGA
A DP ENERGY PROJECT

Foreshore Site Investigation Application

Maps





TUSKAR ROCK

DEPTHS IN METRES
SCALE 1:150,000 at lat 53°00'

CHART ACCURACY
Owing to the age and quality of the source information, some detail on this chart may not be presented accurately. Particular caution is advised when navigating in the vicinity of dangers, even when using an electronic positioning system such as GPS.

MARINE FARMS
Marine farms are shown within the area of this chart. They may not all be shown individually and their positions may change frequently. Marine farms may be marked by 'M' or similar letters or numbers. Mariners are advised to avoid these structures and their associated moorings.

Depths are in metres and are reduced to Chart Datum, which is approximately the level of Lowest Astronomical Tide. Heights are in metres. Underline figures are drying heights above Chart Datum. All other heights are above Mean High Water Springs.
Soundings are referred to the WGS84 compatible datum, European Terrestrial Reference System 1989 Datum.
CAUTION - see CHART ACCURACY note.
Navigational marks IALA Maritime Buoyage System - Region A (Red to port).
Projection: Mercator.
Sources: See Source Diagram. The topography is derived chiefly from Ordnance Survey of Ireland maps. Later information has also been included.

OIL AND GAS FIELDS
Production platforms and associated structures including leader moorings, storage tankers and platforms are indicated, generally exhibit M(E) lights, survival strobe lights, and audible fog signals. Unmanned navigation is prohibited within 500 metres of all such structures.
WRECKS
Wrecks and obstructions are so shown inside the 10 metre contour to the area of larger scale charts.
PIPELINES
Markings are advised and to assist you to avoid the vicinity of pipelines. Pipelines are not always covered and their depths may significantly reduce the charted depths. They may also have uncharted and/or unlit cables. Looking over the horizon unrecognizable objects, including a vessel in distress, may be observed.
OBSTRUCTION CARDS
Markings are advised and to assist you to avoid the vicinity of obstruction cards.
HISTORY AND MILITARY WRECKS
The names of historic and military wrecks are provided here. Unmanned navigation is prohibited within 500 metres of all such structures.

Tide Levels referred to Datum of Soundings

Place	Lat		Long		Heights in metres above datum		Datum and remarks
	N	W	M	W	M	W	
Galilee	51 54 2	8 31	3 9	3 2	1 4	0 6	0.15m ABOVE Ordnance Datum (O.D.)
Call	51 51	8 16	4 1	3 2	1 8	0 4	0.15m ABOVE Ordnance Datum (O.D.)
Sallicotton	51 50	8 01	4 1	3 2	1 2	0 4	0.15m ABOVE Ordnance Datum (O.D.)
Youghal	51 57	5 51	3 9	3 1	1 2	0 3	0.48m ABOVE Ordnance Datum (O.D.)
Dunmore Harbour	51 59	6 50	4 2	3 2	1 4	0 4	0.20m ABOVE Ordnance Datum (O.D.)
Dunmore East	52 00	7 54	4 1	3 2	1 1	0 4	0.20m ABOVE Ordnance Datum (O.D.)
Ballinacorney Head	52 12	6 45	4 1	3 2	1 5	0 6	0.15m ABOVE Ordnance Datum (O.D.)
Great Saline	52 07	6 37	3 9	3 1	1 5	0 6	0.15m ABOVE Ordnance Datum (O.D.)
Carraig Point	52 10	6 22	3 0	2 2	-	-	-

SOURCES

Irish Government Surveys
• 2005-2012 Partial sea floor coverage
British Government Surveys
• 1909-1952 1:25,000
• 1976-1981 1:50,000
British Government Surveys
• 1942-1986 1:50,000 - 23,100
• 1951-1981 1:63,720 - 1:73,000
Other Surveys
• 1992 1:10,000
• 1978 1:30,000
• Passage soundings

© British Crown and OceanWise, 2020. All rights reserved.
License No. EK001-FN800-02977. Not to be used for Navigation.

- Legend**
- ▭ Foreshore Licence Area
 - Mean High Water Mark
 - - - Irish Territorial Sea 12nm Limit
 - ITM Grid Coordinate Intersect

Ver	Date	Drawn by	Checked	Approved
V1	16/01/2020	AM	CMG	SDP

Map prepared by: Agnieszka Matysik.
MEngSc in Environmental Engineering, PGD in Sustainable Energy, HDGGIS

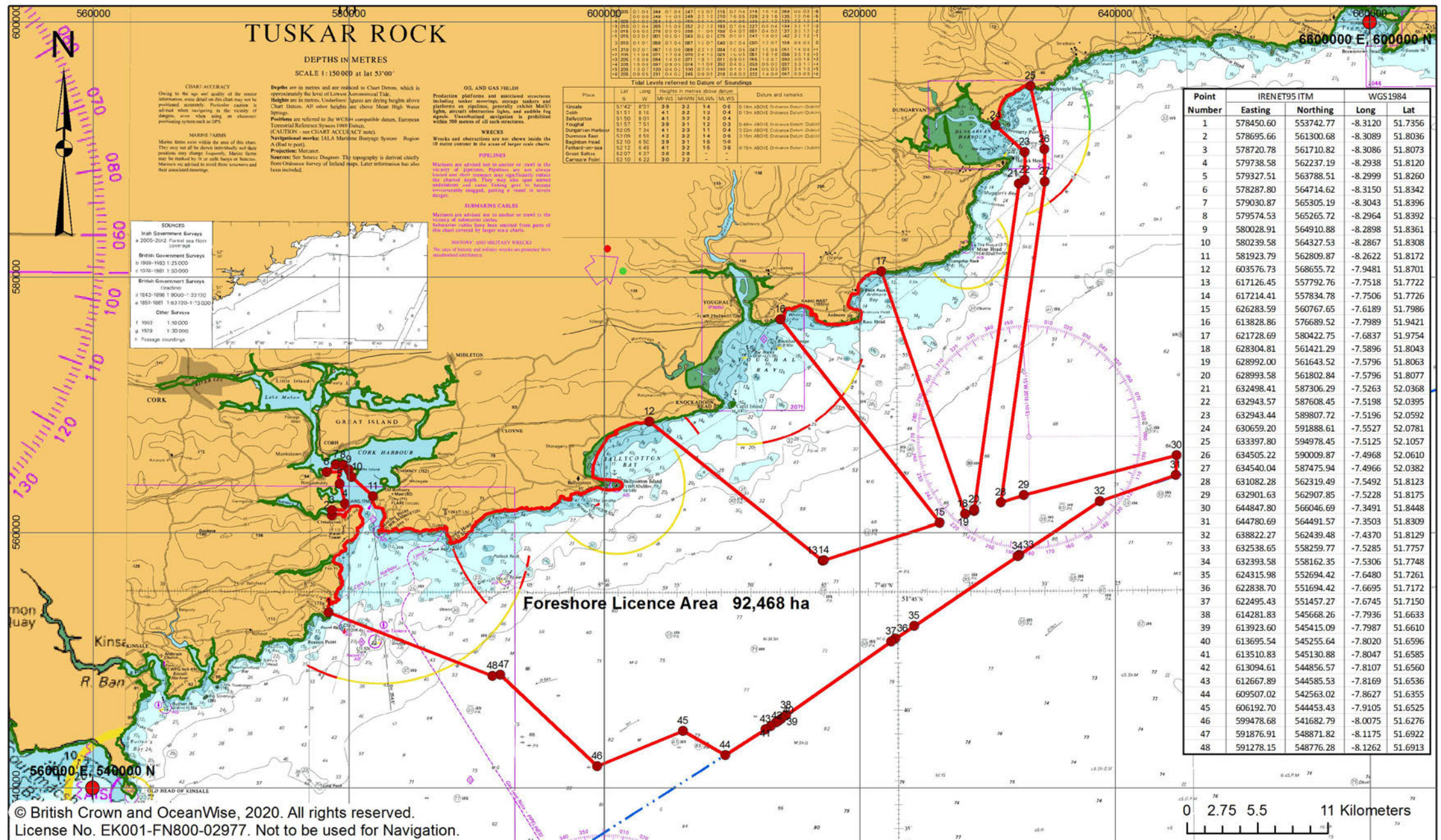
Filename: ForeshoreLicenceMap1	Size A3
Scale: 1:380,000	Printed @ A3
Coordinate System: IRENET95 Irish Transverse Mercator	
Projection: Transverse Mercator	

Mill House, Buttevant, P51 TN35
Co. Cork, Ireland
www.dpenergy.com
All Rights Reserved, 2020

Foreshore Licence Map 1

File Number: FS006859

Inis Ealga Marine Energy Park



Point Number	IRENET95 ITM		WGS1984	
	Easting	Northing	Long	Lat
1	578450.60	553742.77	-8.3120	51.7356
2	578695.66	561300.68	-8.3089	51.8036
3	578720.78	561710.82	-8.3086	51.8073
4	579738.58	562237.19	-8.2938	51.8120
5	579327.51	563788.51	-8.2999	51.8260
6	578287.80	564714.62	-8.3150	51.8342
7	579030.87	565305.19	-8.3043	51.8396
8	579574.53	565265.72	-8.2964	51.8392
9	580028.91	564910.88	-8.2898	51.8361
10	580239.58	564327.55	-8.2867	51.8308
11	581923.79	562809.87	-8.2622	51.8172
12	603576.73	568655.72	-7.9481	51.8701
13	617126.45	557792.76	-7.7518	51.7722
14	617214.41	557834.78	-7.7506	51.7726
15	626283.59	560767.65	-7.6189	51.7986
16	613828.86	576689.52	-7.7989	51.9421
17	621728.69	580422.75	-7.6837	51.9754
18	628304.81	561421.29	-7.5896	51.8043
19	628992.00	561643.52	-7.5796	51.8063
20	628993.58	561802.84	-7.5796	51.8077
21	632498.41	587306.29	-7.5263	52.0368
22	632943.57	587608.45	-7.5198	52.0395
23	632943.44	589807.72	-7.5196	52.0592
24	630659.20	591888.61	-7.5527	52.0781
25	633397.80	594978.45	-7.5125	52.1057
26	634505.22	590009.87	-7.4968	52.0610
27	634540.04	584754.94	-7.4966	52.0382
28	631082.28	562319.49	-7.5492	51.8123
29	632901.63	562907.85	-7.5228	51.8175
30	644847.80	566046.69	-7.3491	51.8448
31	644780.69	564491.57	-7.3503	51.8309
32	638822.27	562439.48	-7.4370	51.8129
33	632538.65	558259.77	-7.5285	51.7757
34	632393.58	558162.35	-7.5306	51.7748
35	624315.98	552694.42	-7.6480	51.7261
36	622838.70	551694.42	-7.6695	51.7172
37	622495.43	551457.27	-7.6745	51.7150
38	614281.83	545668.26	-7.7936	51.6633
39	613923.60	545415.09	-7.7987	51.6610
40	613695.54	545255.64	-7.8020	51.6596
41	613510.83	545130.88	-7.8047	51.6585
42	613094.61	544856.57	-7.8107	51.6560
43	612667.89	544585.53	-7.8169	51.6536
44	609507.02	542563.02	-7.8627	51.6355
45	606192.70	544453.43	-7.9105	51.6525
46	599478.68	541682.79	-8.0075	51.6276
47	591876.91	548871.82	-8.1175	51.6922
48	591278.15	548776.28	-8.1262	51.6913

© British Crown and OceanWise, 2020. All rights reserved.
 License No. EK001-FN800-02977. Not to be used for Navigation.

Figure 2
Geographic Coordinates of the Area
 File Number: FS006859
 Inis Ealga Marine Energy Park

Legend

- ▭ Foreshore Licence Area
- Mean High Water Mark
- - - Irish Territorial Sea 12nm Limit
- ITM Grid Coordinate Intersect

Ver	Date	Drawn by	Checked	Approved
V1	16/01/2020	AM	CMG	SDP
Map prepared by: Agnieszka Matysik. MEngSc in Environmental Engineering, PGD in Sustainable Energy, HDGGIS				
Filename: Figure2_GeographicCoordinatesoftheArea			Size A3	
Scale: 1:380,000		Printed @ A3		
Coordinate System: IRENET95 Irish Transverse Mercator Projection: Transverse Mercator				

Mill House, Buttevant, P51 TN35
 Co. Cork, Ireland
 www.dpenergy.com
 All Rights Reserved, 2020

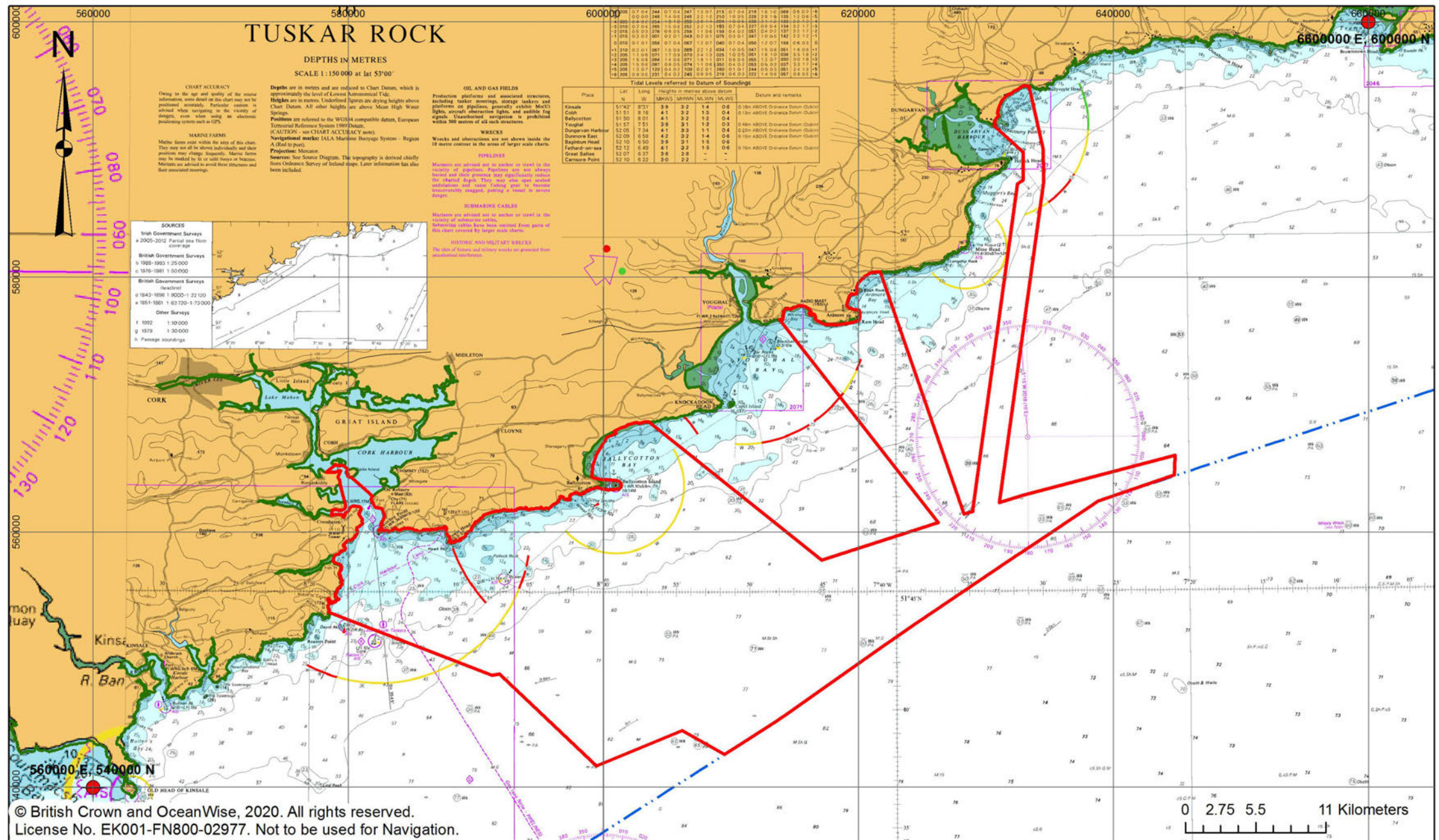


Figure 3
Inis Ealga Site on Admiralty Chart
 File Number: FS006859
 Inis Ealga Marine Energy Park

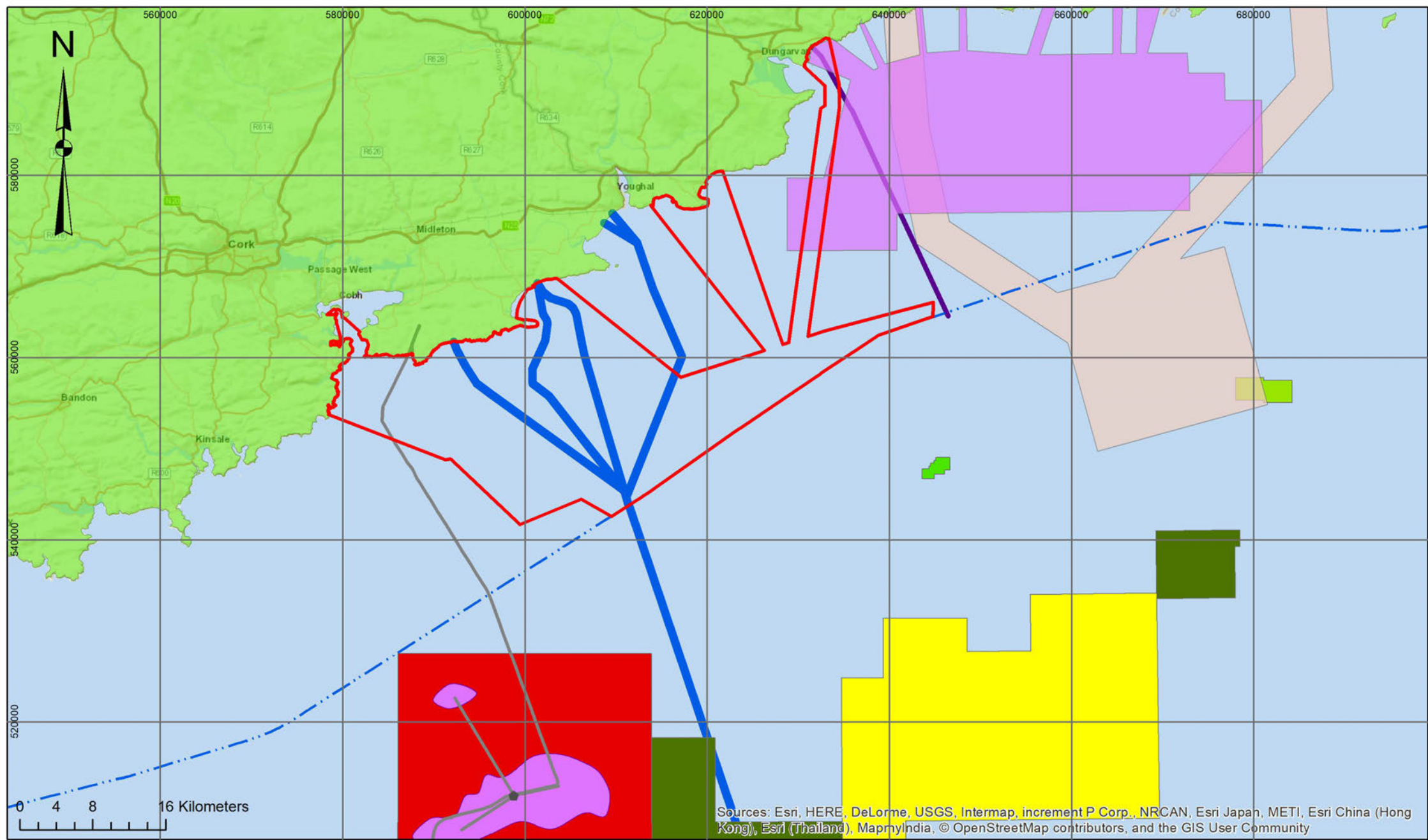
Ver	Date	Drawn by	Checked	Approved
V1	17/02/2020	AM	CMG	SDP

Map prepared by: Agnieszka Matysik.
 MEngSc in Environmental Engineering, PGD in Sustainable Energy, HDGGIS

Filename: Figure3_InisEalgaSiteonAdmiraltyChart	Size A3
Scale: 1:380,000	Printed @ A3
Coordinate System: IREN95 Irish Transverse Mercator	
Projection: Transverse Mercator	

DP ENERGY

Mill House, Buttevant, P51 TN35
 Co. Cork, Ireland
 www.dpenergy.com
 All Rights Reserved, 2020



Sources: Esri, HERE, DeLorme, USGS, Intermap, increment P Corp., NRCAN, Esri Japan, METI, Esri China (Hong Kong), Esri (Thailand), MapmyIndia, © OpenStreetMap contributors, and the GIS User Community

Figure 4

Other Developments

File Number: FS006859
Inis Ealga Marine Energy Park

Legend

Foreshore Licence Area	Exploration Licence
Viridian Application Area	Lease Undertaking
SSE Application Area	Licensing Option
PSE Kinsale Energy	Petroleum Lease
Helvick (Oil Exploration) Field	Irish Territorial Sea 12nm Limit
IFC-1	
Celtic Interconnector Survey Routes	
Offshore Gas Pipeline	

Data Source: DCCAE, DHPLG, MI, EIRGRID, ARUP

Ver	Date	Drawn by	Checked	Approved
V1	14/02/2020	AM	CMG	SDP
Filename: Figure4_OtherDevelopments				Size A3
Scale: 1:530,000		Printed @ A3		
Coordinate System: IREN95 Irish Transverse Mercator Projection: Transverse Mercator				



DP ENERGY

Mill House, Buttevant, P51 TN35
Co. Cork, Ireland
www.dpenergy.com
All Rights Reserved, 2020

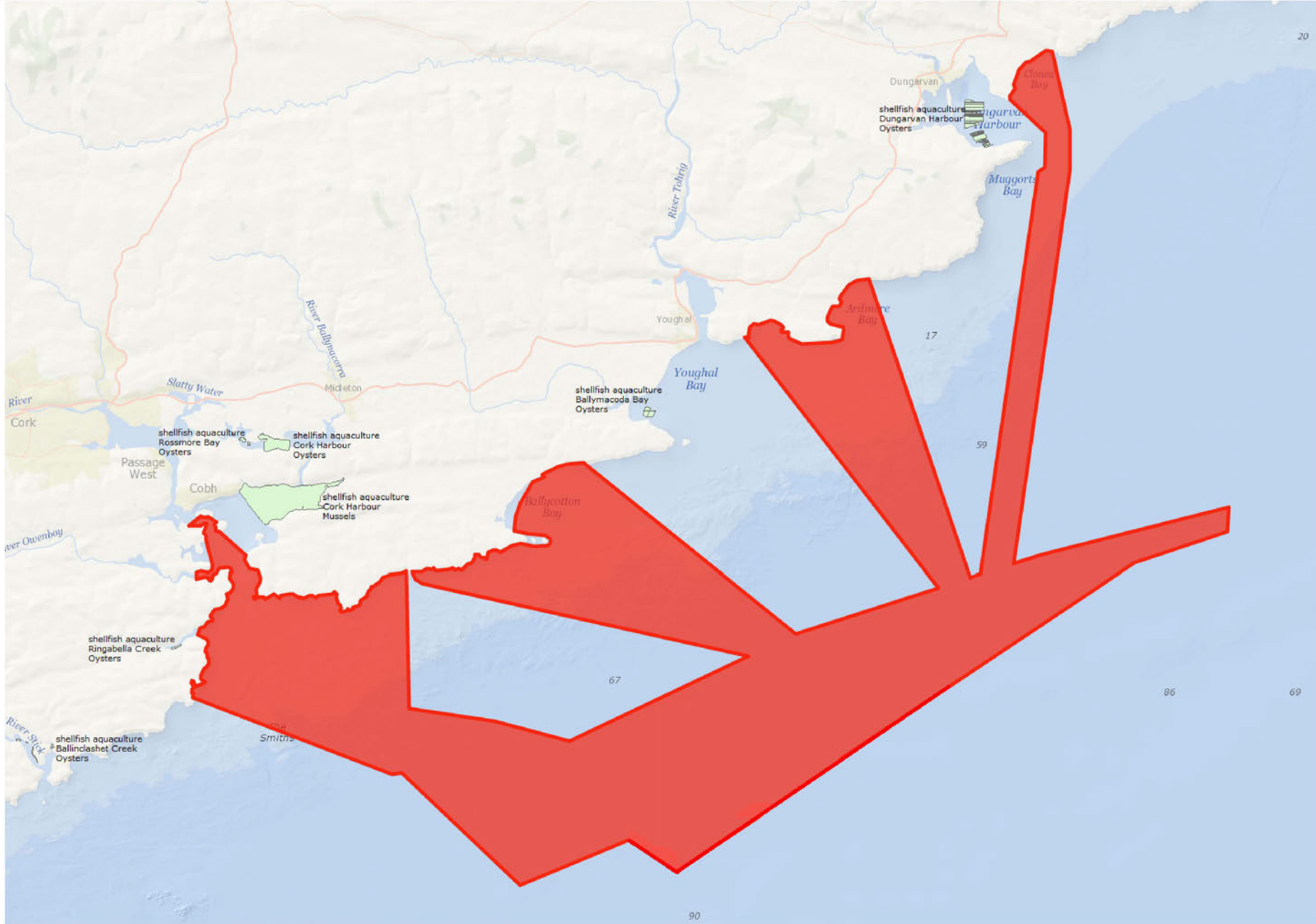


Figure 5 Aquaculture

File Number: FS006859
Inis Ealga Marine Energy Park

Legend

■ Foreshore Licence Area

Data from the DAFM Aquaculture Sites theme accessed through Ireland's Marine Atlas at <http://atlas.marine.ie/>, 09/08/2019.

Ver	Date	Drawn by	Checked	Approved
V1	16/01/2020	AM	CMG	SDP
Map prepared by: Agnieszka Matysik, MEngSc in Environmental Engineering, PGD in Sustainable Energy, HDG GIS				
Filename: Figure5_Aquaculture			Size A3	
Scale: 1:515,000		Printed @ A3		
Coordinate System: IRENET95 Irish Transverse Mercator Projection: Transverse Mercator				



Mill House, Buttevant, P51 TN35
Co. Cork, Ireland

www.dpenergy.com

All Rights Reserved, 2020

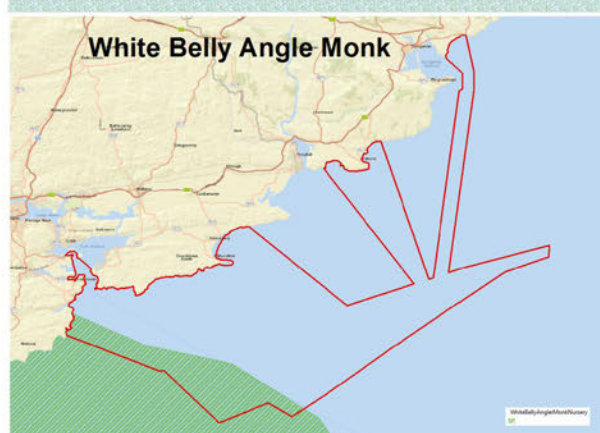
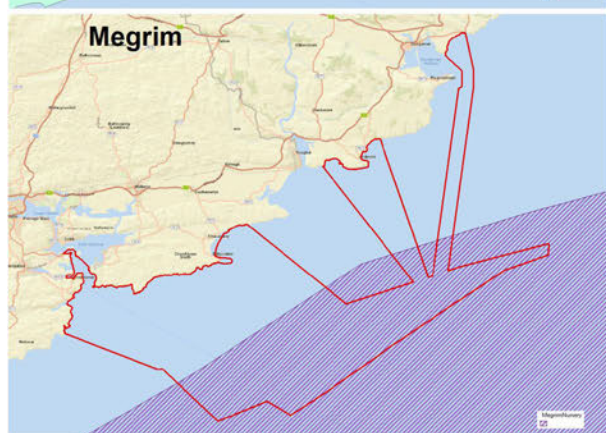
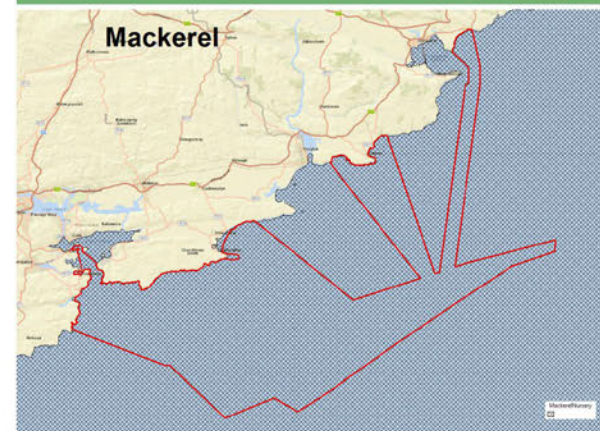
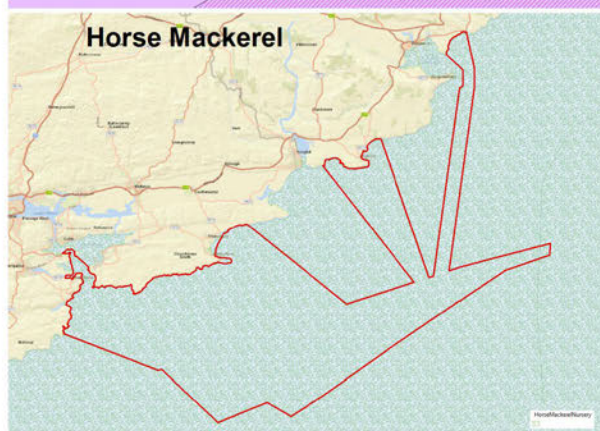
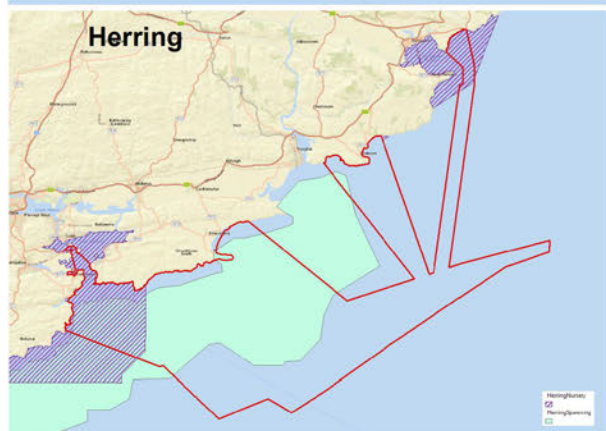
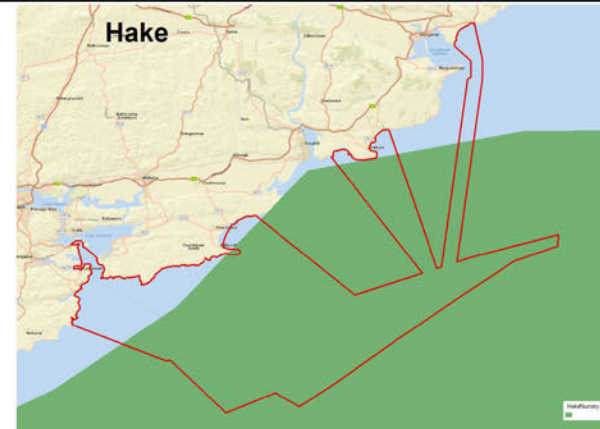
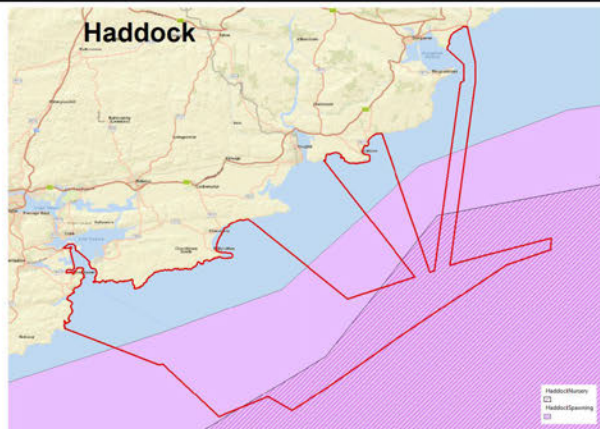
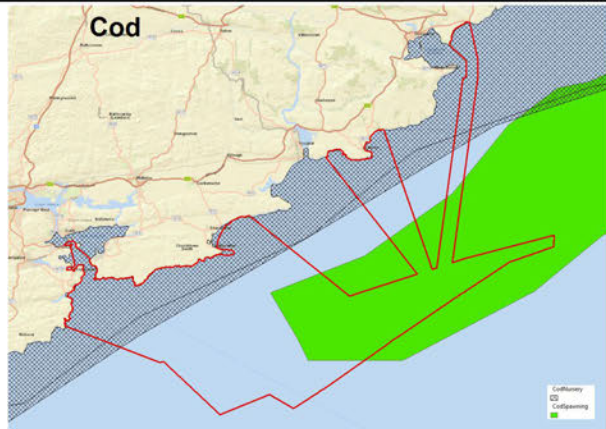



Figure 6

Fish Spawning and Nursery

File Number: FS006859

Inis Ealga Marine Energy Park

Legend

 Foreshore Licence Area

Data from the Species distribution Sea Fisheries theme accessed through Ireland's Marine Atlas at <http://atlas.marine.ie/>, 09/08/2019.

Sources: Esri, HERE, Garmin, USGS, Intermap, INCREMENT P, NRCan, Esri Japan, METI, Esri China (Hong Kong), Esri Korea, Esri (Thailand), NGCC, (c) OpenStreetMap Contributors, and the GIS User Community

Ver	Date	Drawn by	Checked	Approved
V1	16/01/2020	AM	CMG	SDP
Map prepared by: Agnieszka Matysik, MEngSc in Environmental Engineering, PGD in Sustainable Energy, HDG GIS				
Filename: Figure6_SpawningandNursery			Size A3	
Scale: 1:340,681		Printed @ A3		
Coordinate System: IRENET95 Irish Transverse Mercator Projection: Transverse Mercator				



Mill House, Buttevant, P51 TN35
Co. Cork, Ireland

www.dpenergy.com

All Rights Reserved, 2020

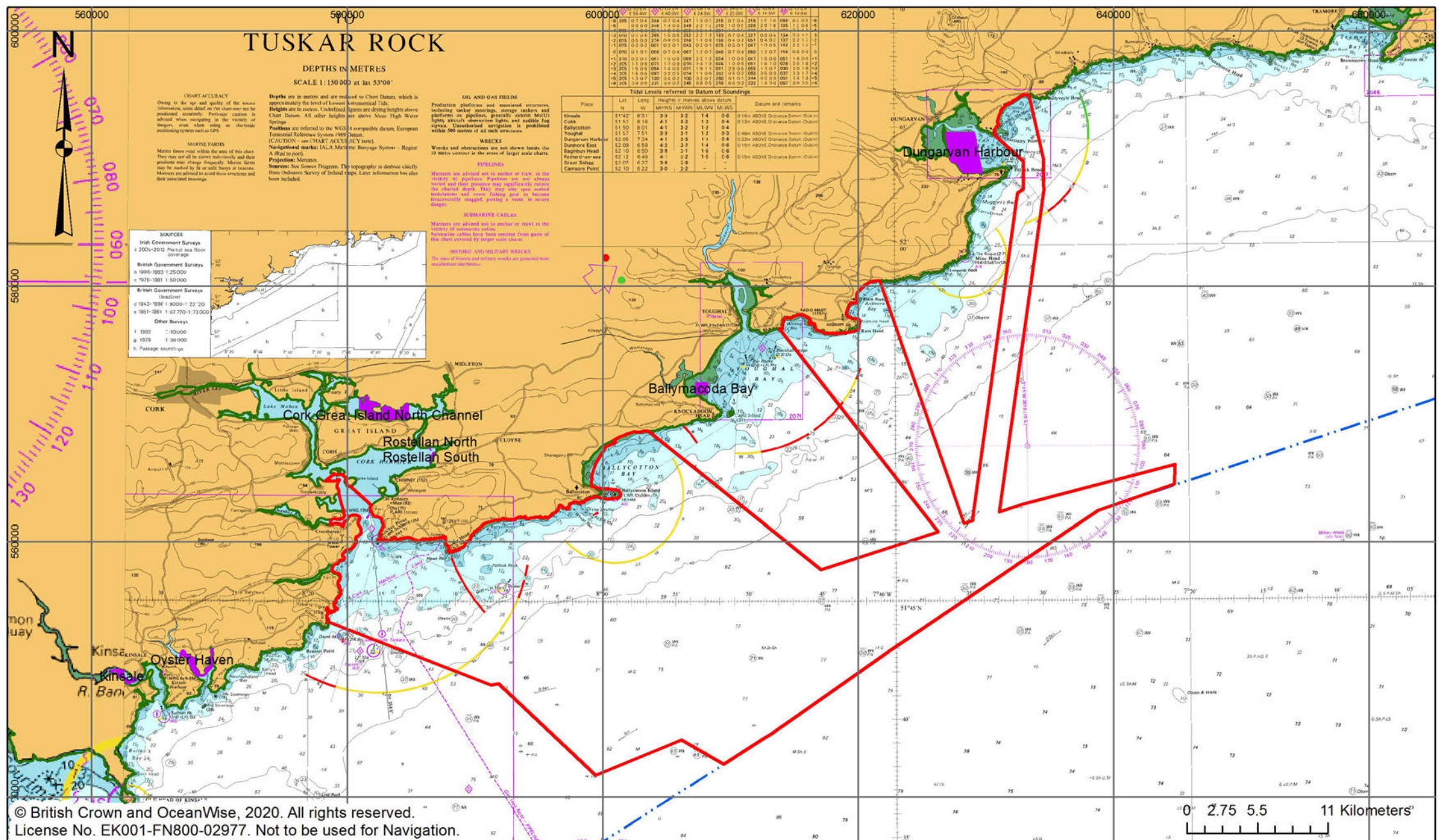


Figure 7
Designated Shelfish Waters
 File Number: FS006859
 Inis Ealga Marine Energy Park

Legend

- ▭ Foreshore Licence Area
- ▭ SWD Shellfish Waters
- ▭ Mean High Water Mark
- - - Irish Territorial Sea 12nm Limit

Map prepared by: Agnieszka Matysik.
 MEngSc in Environmental Engineering, PGD in Sustainable Energy, HDG GIS

Filename: Figure7_DSW Size A3

Scale: 1:380,000 Printed @ A3

Coordinate System: IRENET95 Irish Transverse Mercator
 Projection: Transverse Mercator

Data Source: DHPGL, OSI, DCCAE

Ver	Date	Drawn by	Checked	Approved
V1	16/01/2020	AM	CMG	SDP

DP ENERGY

Mill House, Buttevant, P51 TN35
 Co. Cork, Ireland
 www.dpenergy.com
 All Rights Reserved, 2020

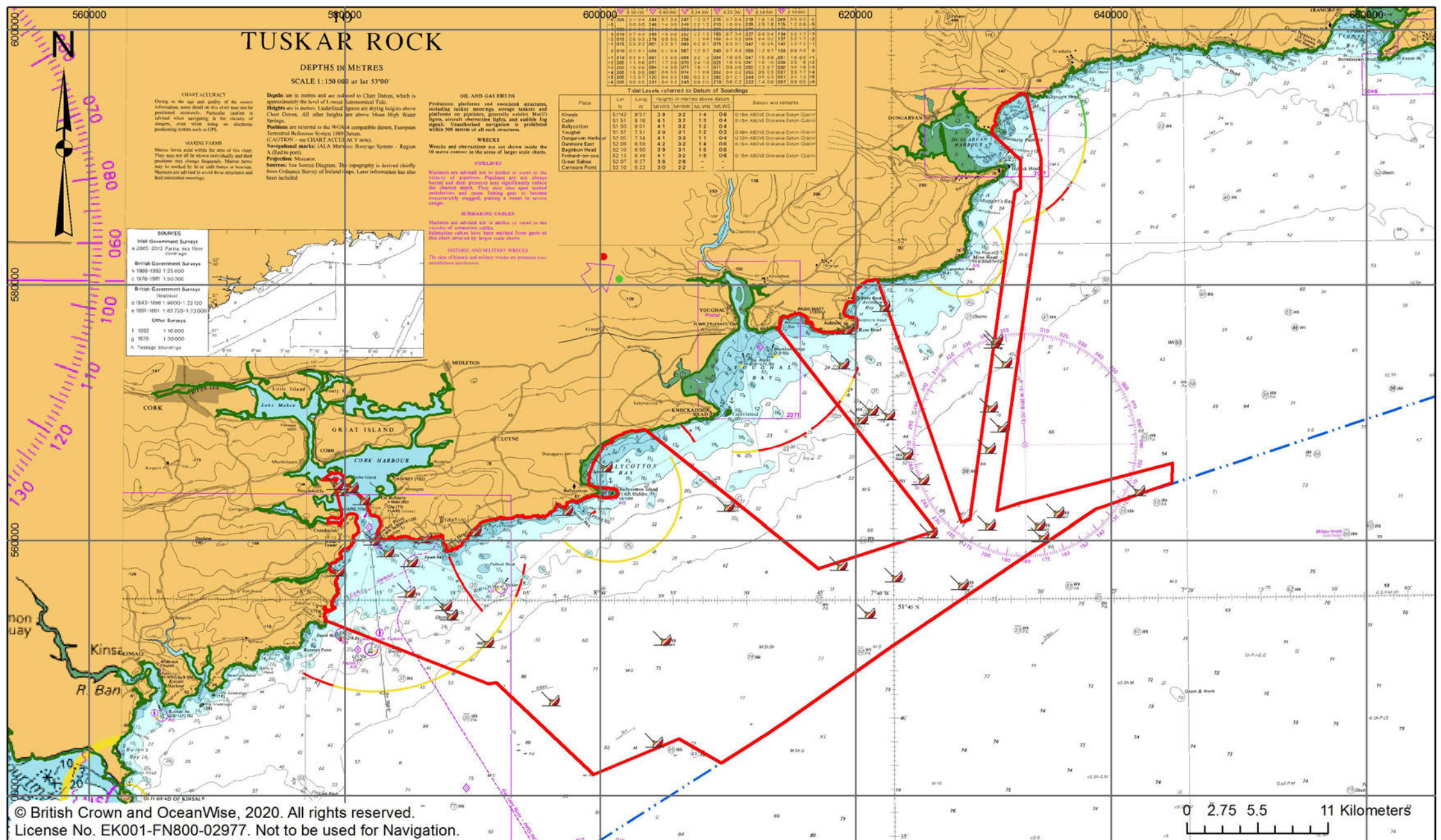


Figure 8
Shipwrecks
 File Number: FS006859
 Inis Ealga Marine Energy Park

Legend

- ▭ Foreshore Licence Area
- Shipwrecks within Foreshore Licence Area
- Mean High Water Mark
- - - Irish Territorial Sea 12nm Limit

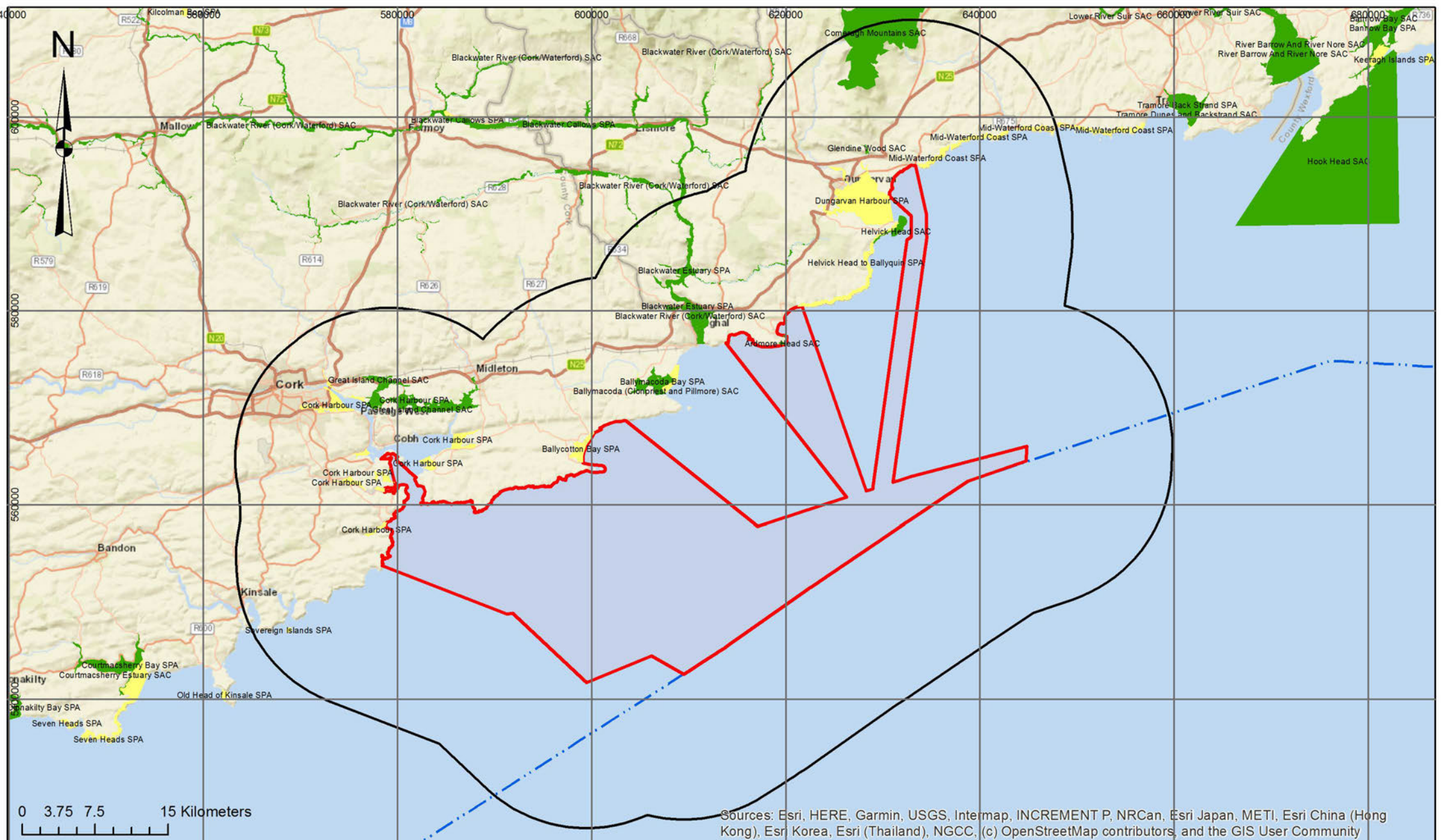
Data Source: Dept. of Culture, Heritage and the Gaeltacht, OSI, DCCA/E

Ver	Date	Drawn by	Checked	Approved
V1	16/01/2020	AM	CMG	SDP

Map prepared by: Agnieszka Matysik.
 MEngSc in Environmental Engineering, PGD in Sustainable Energy, HDG GIS

Filename: Figure8_Shipwrecks	Size A3
Scale: 1:380,000	Printed @ A3
Coordinate System: IREN95 Irish Transverse Mercator	
Projection: Transverse Mercator	

Mill House, Buttevant, P51 TN35
 Co. Cork, Ireland
 www.dpenergy.com
 All Rights Reserved, 2020



0 3.75 7.5 15 Kilometers

Sources: Esri, HERE, Garmin, USGS, Intermap, INCREMENT P, NRCan, Esri Japan, METI, Esri China (Hong Kong), Esri Korea, Esri (Thailand), NGCC, (c) OpenStreetMap contributors, and the GIS User Community

Figure 9

Natura 2000

File Number: FS006859
Inis Ealga Marine Energy Park

- Legend**
- ▭ Foreshore Licence Area
 - Foreshore Licence Area 15km Buffer
 - SAC
 - SPA
 - - - Irish Territorial Sea 12nm Limit

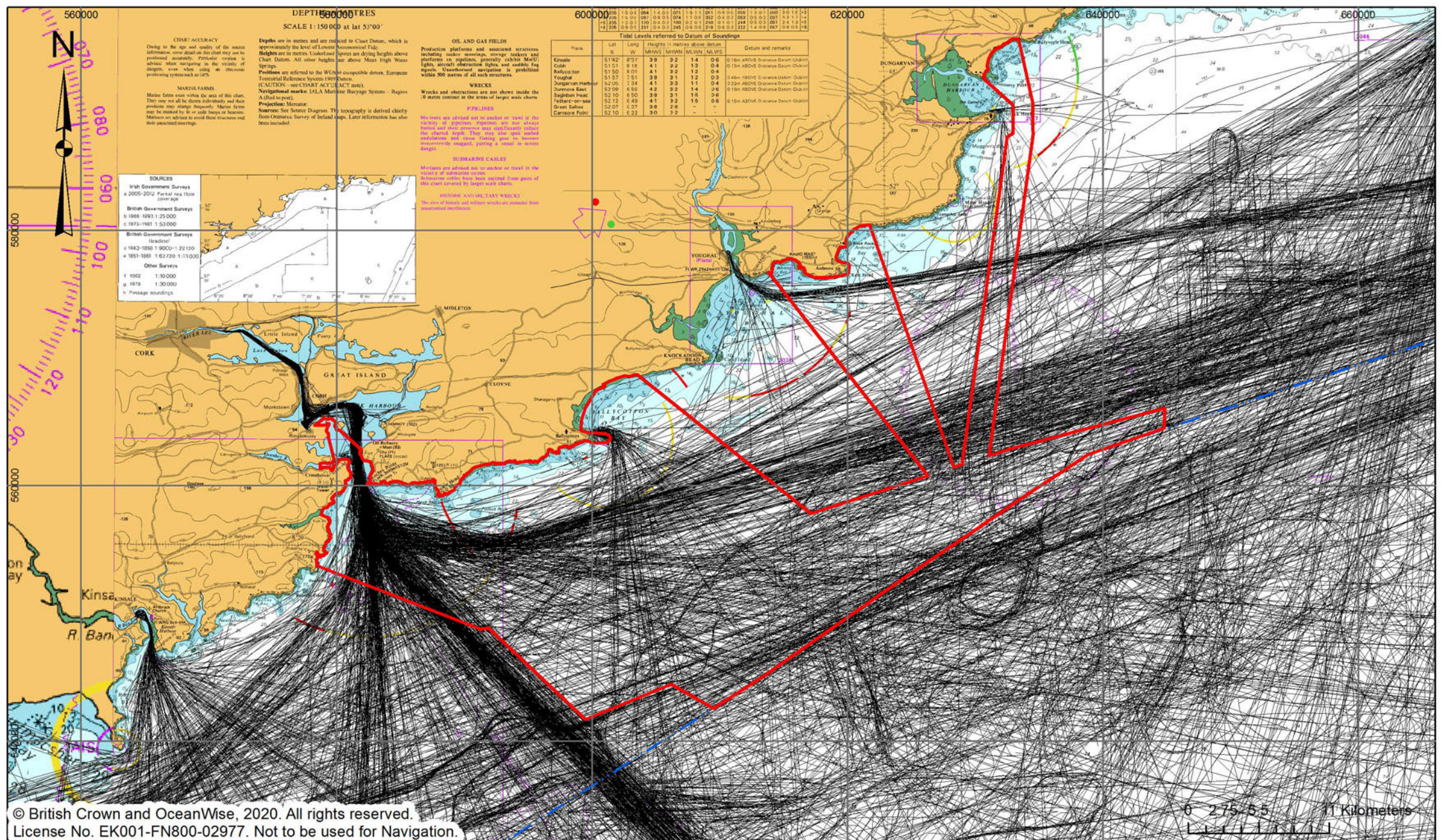
Data Source: NPWS, DCCA

Ver	Date	Drawn by	Checked	Approved
V1	16/01/2020	AM	CMG	SDP
Filename: Figure9_ProtectedAreas				Size A3
Scale: 1:500,000		Printed @ A3		
Coordinate System: IREN95 Irish Transverse Mercator				
Projection: Transverse Mercator				



DP ENERGY

Mill House, Buttevant, P51 TN35
Co. Cork, Ireland
www.dpenergy.com
All Rights Reserved, 2020



© British Crown and OceanWise, 2020. All rights reserved.
 License No. EK001-FN800-02977. Not to be used for Navigation.

0 275 55 11 Kilometers

Figure 10

Shipping

File Number: FS006859
 Inis Ealga Marine Energy Park

- Legend**
- Foreshore Licence Area
 - Shipping Routes (2014 and 2015)
 - Irish Territorial Sea 12nm Limit

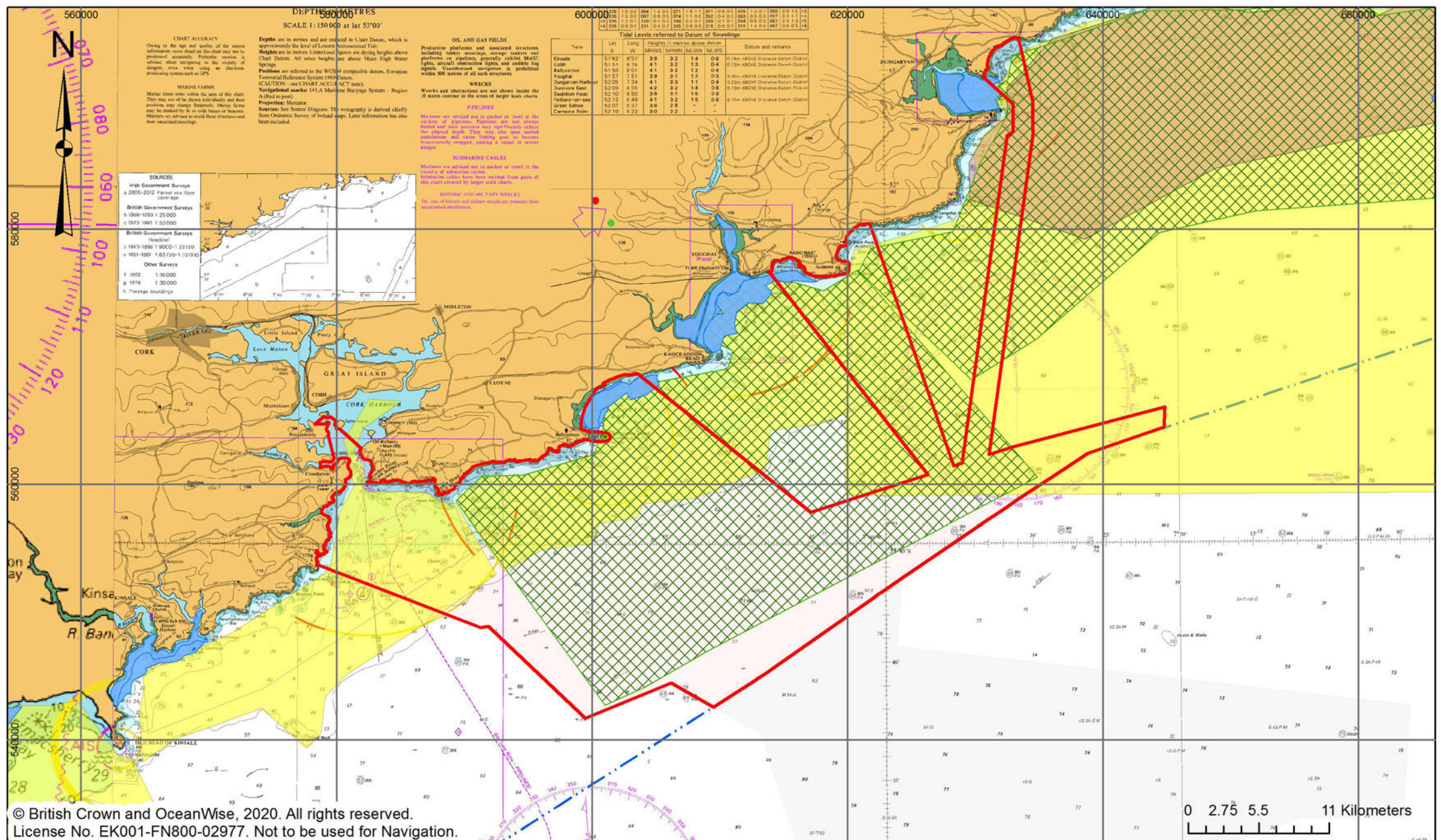
Data Source: data.gov.uk, DCCAE

Ver	Date	Drawn by	Checked	Approved
V1	16/01/2020	AM	CMG	SDP

Map prepared by: Agnieszka Matysik.
 MEngSc in Environmental Engineering, PGD in Sustainable Energy, HDG GIS

Filename: Figure10_Shipping	Size A3
Scale: 1:380,000	Printed @ A3
Coordinate System: IREN95 Irish Transverse Mercator	
Projection: Transverse Mercator	

Mill House, Buttevant, P51 TN35
 Co. Cork, Ireland
 www.dpenergy.com
 All Rights Reserved, 2020



SOURCES

- Irish Government Surveys
 - a 2005-2012 Partial sea floor coverage
- British Government Surveys
 - b 1968-1993 1:25,000
 - c 1973-1981 1:50,000
- British Government Surveys (historic)
 - d 1843-1898 1:90,000-1:22,120
 - e 1853-1882 1:62,200-1:32,000
- Other Surveys
 - f 1932 1:10,000
 - g 1918 1:30,000
 - h Passage soundings

© British Crown and OceanWise, 2020. All rights reserved.
 License No. EK001-FN800-02977. Not to be used for Navigation.

Tidal Levels referred to Datum of Soundings

Face	Lat	Long	Heights in metres above datum		Datum and remarks		
	S	W	MHW	MLWS			
Enniscorthy	51°42'	8°31'	3.9	3.2	1.4	0.6	0.15m ABOVE Ordnance Datum (O.D.)
Coah	51°51'	9°16'	4.1	3.2	1.3	0.4	0.13m ABOVE Ordnance Datum (O.D.)
Ballinacorney	51°50'	8°01'	4.1	3.2	1.2	0.4	0.13m ABOVE Ordnance Datum (O.D.)
Foughal	51°57'	7°51'	3.9	3.1	1.2	0.3	0.40m ABOVE Ordnance Datum (O.D.)
Dungarvan Harbour	52°05'	8°41'	3.3	1.1	0.4	0.4	0.22m ABOVE Ordnance Datum (O.D.)
Dungarvan East	52°09'	8°05'	4.2	3.2	1.4	0.6	0.15m ABOVE Ordnance Datum (O.D.)
Badinon Head	52°10'	6°50'	3.9	3.1	1.6	0.6	0.15m ABOVE Ordnance Datum (O.D.)
Galtee-on-sea	52°12'	6°49'	4.1	3.2	1.5	0.6	0.15m ABOVE Ordnance Datum (O.D.)
Great Saltee	52°07'	6°37'	2.8	2.8	-	-	-
Cannock Point	52°10'	6°22'	3.0	3.2	-	-	-

WRECKS
 Wrecks and obstructions are not shown inside the 10 metre contour in the areas of larger scale charts.

PIPE-LINES
 Pipelines are indicated on this chart or overlaid on the chart by other means. Pipelines are not shown unless they are of a size which may affect navigation. They may be indicated by a red line with cross-ticks. The chart is not to be used for navigation.

SUBMARINE CABLES
 Submarine cables are indicated on this chart or overlaid on the chart by other means. They may be indicated by a red line with cross-ticks. The chart is not to be used for navigation.

HISTORIC AND OTHER MARKERS
 The chart is not to be used for navigation.

Legend

- Foreshore Licence Area
- Dredge Fishing
- Nets Fishing
- Midwater Trawl Fishing
- Pot Fishing
- Irish Territorial Sea 12nm Limit

Data Source: MI, DCCAE

Ver	Date	Drawn by	Checked	Approved
V1	16/01/2020	AM	CMG	SDP

Map prepared by: Agnieszka Matysik.
 MEngSc in Environmental Engineering, PGD in Sustainable Energy, HDG GIS

Filename: Figure11_FishingActivity	Size A3
Scale: 1:380,000	Printed @ A3
Coordinate System: IRENET95 Irish Transverse Mercator	
Projection: Transverse Mercator	

DP ENERGY

Mill House, Buttevant, P51 TN35
 Co. Cork, Ireland
www.dpenergy.com
 All Rights Reserved, 2020

Figure 11
Fishing Activity
 File Number: FS006859
 Inis Ealga Marine Energy Park

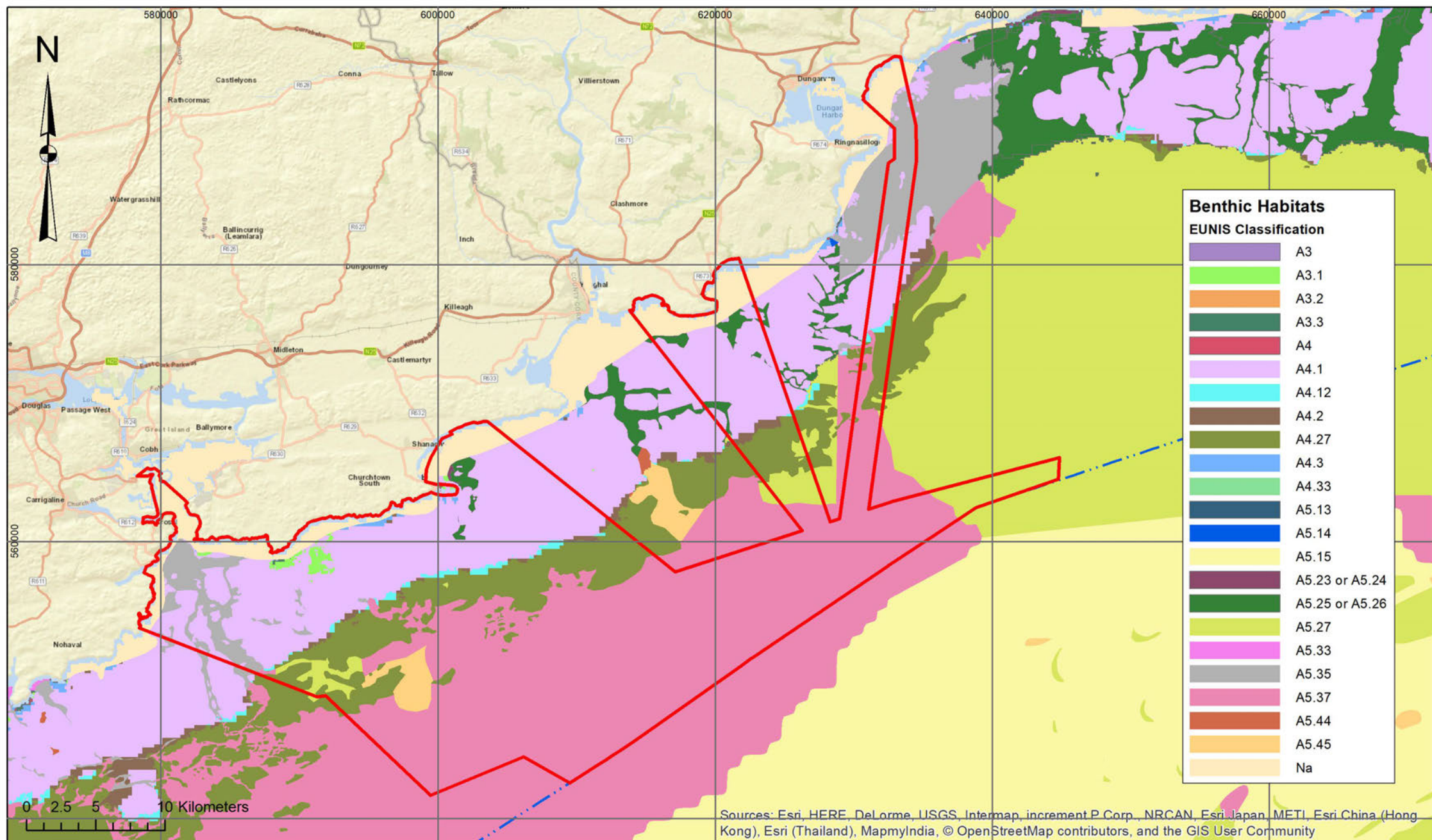


Figure 12

Benthic Habitats

File Number: FS006859
Inis Ealga Marine Energy Park

Legend

- Foreshore Licence Area
- Irish Territorial Sea 12nm Limit

Data Source: EMODnet, DCCA

Ver	Date	Drawn by	Checked	Approved
V1	14/02/2020	AM	CMG	SDP

Map prepared by: Agnieszka Matysik, MEngSc in Environmental Engineering, PGD in Sustainable Energy, HDG GIS

Filename: Figure12_BenthicHabitats Size A3

Scale: 1:350,000 Printed @ A3

Coordinate System: IREN95 Irish Transverse Mercator
Projection: Transverse Mercator



Mill House, Buttevant, P51 TN35
Co. Cork, Ireland

www.dpenergy.com

All Rights Reserved, 2020

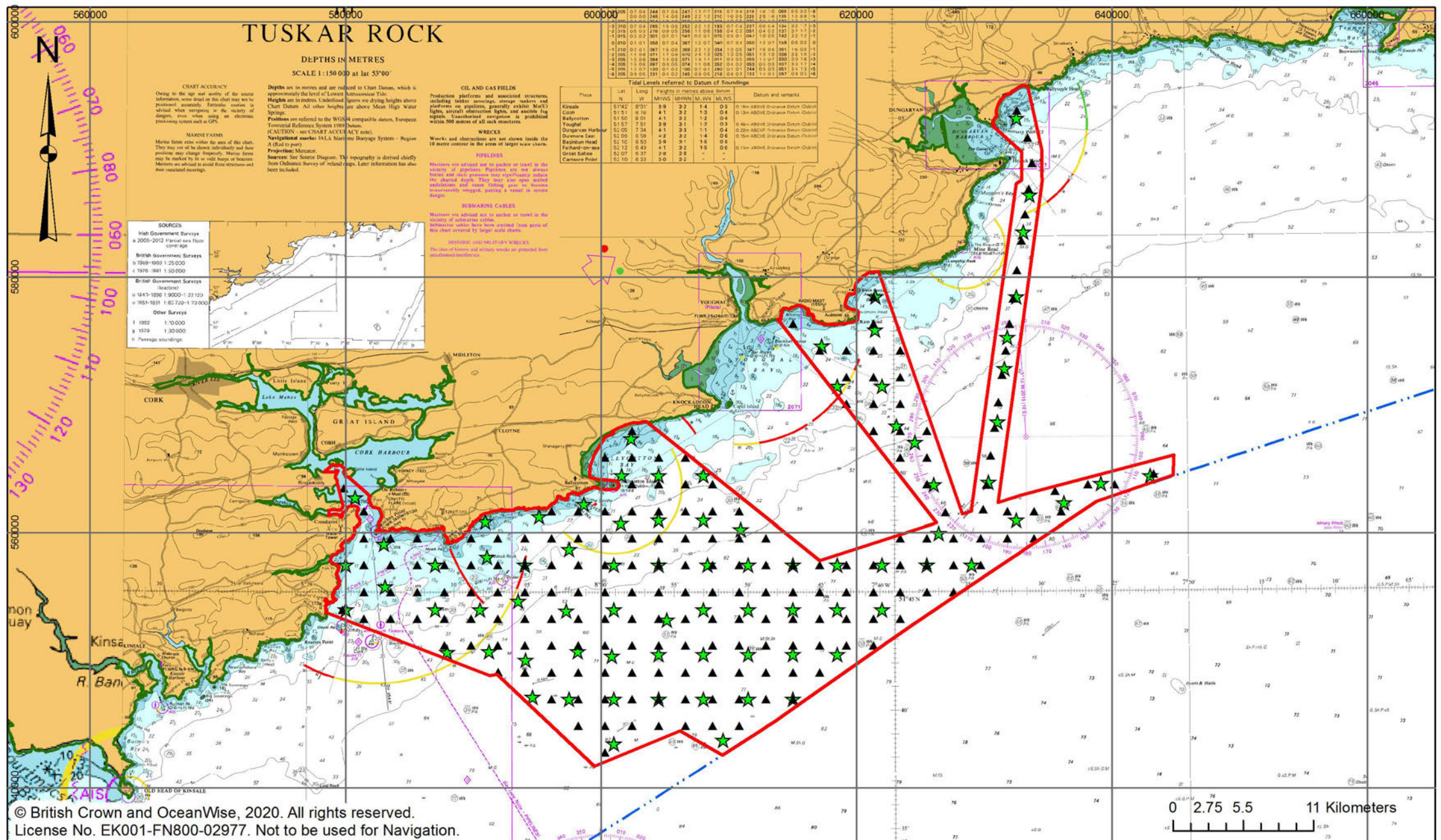


Figure 13

Indicative Sampling Locations

File Number: FS006859
 Inis Ealga Marine Energy Park

- Legend**
- Foreshore Licence Area
 - ▲ Indicative VC/CPT Positions
 - ★ Indicative Grab Sample Positions
 - Mean High Water Mark
 - - - Irish Territorial Sea 12nm Limit

Data Source: EMODnet, DCCA

Ver	Date	Drawn by	Checked	Approved
V1	29/01/2020	AM	CMG	SDP

Map prepared by: Agnieszka Matysik,
 MEngSc in Environmental Engineering, PGD in Sustainable Energy, HDG GIS

Filename: Figure13_IndicativeSamplingLocations	Size A3
Scale: 1:380,000	Printed @ A3
Coordinate System: IREN95 Irish Transverse Mercator	
Projection: Transverse Mercator	

Mill House, Buttevant, P51 TN35
 Co. Cork, Ireland
 www.dpenergy.com
 All Rights Reserved, 2020